

## HOTEL GUIDE

# HOTEL GUIDE

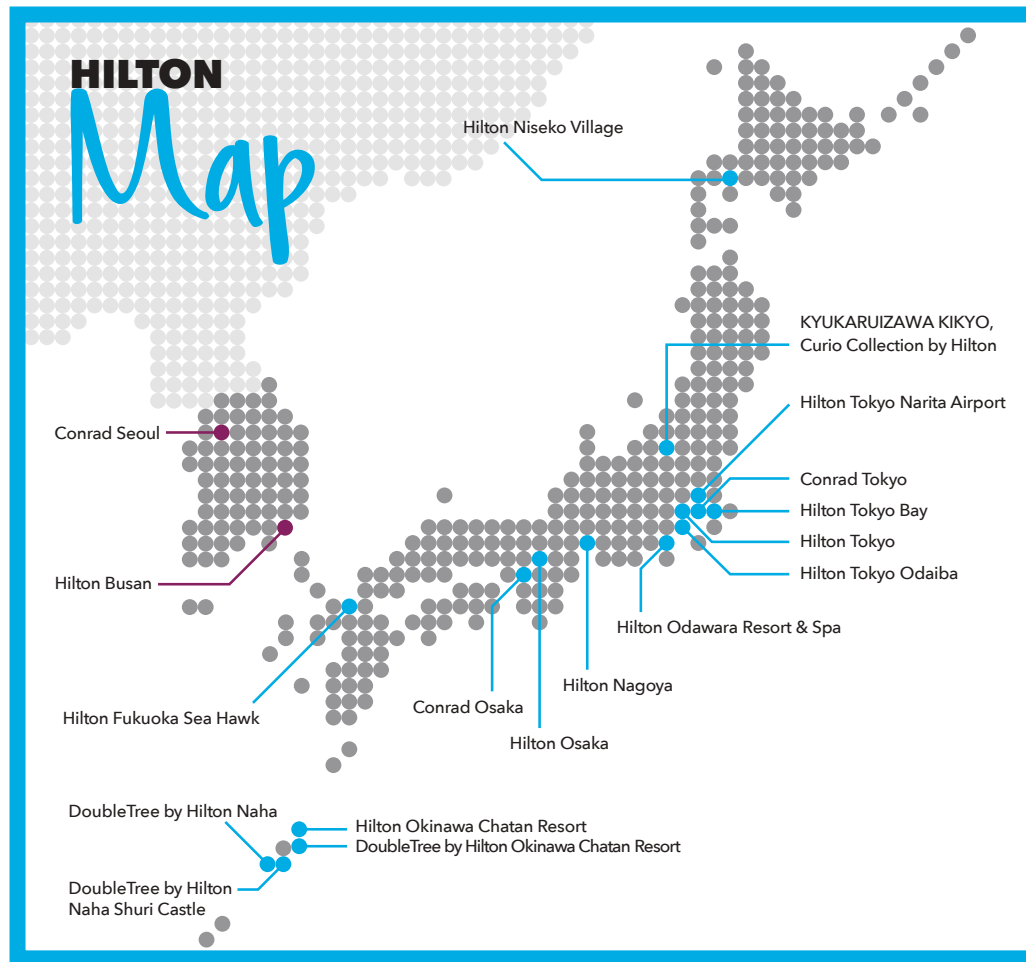
# Japan & South Korea

希尔顿酒店会奖旅游指南——日本、南韩

# Contents

## 目录

<b>Welcome Letter 欢迎词</b>	03
<b>Tokyo</b>	04
Conrad Tokyo	05
Hilton Tokyo	06
Hilton Tokyo Bay	07
Hilton Tokyo Odaiba	08
<b>Odawara</b>	
Hilton Odawara Resort & Spa	09
<b>Osaka</b>	10
Conrad Osaka	11
Hilton Osaka	12
<b>Nagoya</b>	
Hilton Nagoya	13
<b>Niseko</b>	
Hilton Niseko Village	14
<b>Fukuoka</b>	
Hilton Fukuoka Sea Hawk	15
<b>Okinawa</b>	16
Hilton Okinawa Chatan Resort	17
DoubleTree by Hilton Okinawa Chatan Resort	18
DoubleTree by Hilton Naha Shuri Castle	19
DoubleTree by Hilton Naha	20
<b>Seoul &amp; Busan</b>	21
Conrad Seoul	22
Hilton Busan	23
<b>Capacity Chart 容量图表</b>	24
<b>Hilton Honors 希尔顿荣誉客会</b>	26
<b>东京</b>	28
东京康莱德酒店	29
东京希尔顿酒店	30
东京湾希尔顿酒店	31
东京御台场希尔顿酒店	32
<b>小田原</b>	
小田原希尔顿温泉度假村	33
<b>大阪</b>	34
大阪康莱德酒店	35
大阪希尔顿酒店	36
<b>名古屋</b>	
名古屋希尔顿酒店	37
<b>新雪谷</b>	
北海道新雪谷希尔顿度假酒店	38
<b>福冈</b>	
福冈海鹰希尔顿酒店	39
<b>冲绳</b>	
冲绳北谷希尔顿度假酒店	41
冲绳北谷希尔顿逸林度假酒店	42
那霸首里城希尔顿逸林酒店	43
那霸希尔顿逸林酒店	44
<b>首尔与釜山</b>	45
首尔康莱德酒店	46
釜山希尔顿酒店	47



## WELCOME TO Hilton

Choosing the right location remains key to the success of any event, and Japan and South Korea continue to impress with their mix of buzzing metropolises and restful resort destinations – all underpinned by rich local cultures.

Japan is undergoing an infrastructure boom in preparation for the 2019 Rugby World Cup and 2020 Summer Olympics, with major new convention facilities, hotels and unique heritage locations opening for events across the archipelago.

Meanwhile, South Korea is welcoming ever-more events keen to experience ultra-modernity amidst a landscape dotted with historical landmarks. The country put its best and brightest on display during the PyeongChang 2018 Winter Olympics, showcasing the possibilities for events of the future powered by world-first technology.

As important as the right destination is choosing the right partner, and Hilton's portfolio of 18 hotels across Japan and South Korea offers planners a variety of accommodation options and meeting venues to suit all event types.

From the towering top of Tokyo, to the bustling streets of Osaka and the sandy shores of Busan, Hilton is ready to serve all your meeting needs.

### 欢迎到访希尔顿

地利是活动成功的关键之一。日本及南韩均集繁华的都会气息及恬静的度假环境于一身，加上丰富多姿的地道文化，正是理想的活动地点。

为迎接2019年榄球世界杯及2020年夏季奥运会等在全国各地举办的瞩目盛事，日本正如火如荼地进行基础建设，全新的大型会议设施和酒店，以及独有的历史古迹等纷纷开门迎客。

南韩也不甘示弱，其超级现代化和文化古迹处处的特色，吸引越来越多活动到当地举办。作为2018年平昌冬季奥运会的东道主，南韩更施展浑身解数，借助世界级的顶尖科技，为未来的活动展现各种可能。

选择正确的合作夥伴跟选择正确的地点同样重要。希尔顿在日本及南韩共有18家酒店，拥有各种住宿选择和会议场地，能为各类型的活动提供合适的设施和服务。

不论身处东京的高楼或大阪的繁华街道，还是走在釜山的细沙海岸，希尔顿都能满足您一切的会议需要。

**Hilton**

# TOKYO

Major event spaces in Japan's capital city include Tokyo Big Sight, also known as Tokyo International Exhibition Center, and Tokyo International Forum. In the run up to the 2020 Olympics, the city is heavily investing in infrastructure.

Groups can wander around Golden Gai—full of

lively, snug taverns—make a stop at the atmospheric district of Asakusa, visit the Ginza shopping district, or head to Ooedo-Onsen Monogatari, a lavish hot spring park in Odaiba. Other options include a visit to Tokyo Tower for unbeatable views of the city, or discovering Japan's history at the Imperial Palace.



## SKY-HIGH SOPHISTICATION

### Conrad Tokyo

Located above Shiodome Station with a pedestrian connection to Shimbashi Station, the hotel is south of downtown Tokyo in the bustling Shiodome business district, and just a 10-minute stroll from the world-renowned Ginza shopping and entertainment area.

**MEETINGS** The hotel features 12 meeting rooms, with the majority offering natural light. Located in the Annex Tower are two ballrooms, with Kazanami catering for up to 480 people for cocktails or 504 theatre-style, which can be divided into three smaller areas. Hamarikyu Ballroom can be further subdivided into two function rooms catering for a total of 180 for cocktails or theatre-style.

Conrad Tokyo often tailors events by theme, a popular concept being "Modern Japan", featuring food stalls and local artisans in action. An excellent teambuilding activity, guests can discover the art of both sushi making and Japanese BBQ in a well-decorated ballroom with modern, seasonal flower arrangements.

After the dinner, delegates are treated to an entertaining performance that blends Japanese modern dance with original animated computer graphics, merging the real and virtual worlds into a unique show that has captivated international audiences.



**TRAVEL** Haneda International Airport is 18km away, a 30-minute drive from the hotel, while Narita International Airport, 60km away, can be reached in just under 90 minutes. Tokyo's most popular areas—such as Ginza, Asakusa and Akihabara—are within easy reach of the hotel, alongside sights including Hamarikyu Gardens and the Imperial Palace.

## INSIDER'S TIP

**WHEN IN TOKYO**, get to know Japan's most celebrated spirit, sake, with Conrad Tokyo's Sake sommelier, Yasuyuki Kitahara, winner of the 4th World Sake Sommelier Competition. The tasting stands out as a culinary and educational experience alike, focused not only on dining, but on appreciating the finest quality sake and matching cuisine with the correct spirit.

## CONTACTS

ADDRESS: 105-7337, Tokyo, 1-9-1  
Higashi-Shinbashi, Minato-ku, Japan  
TEL: +81-3-6388-8000  
EMAIL: tyoci-salesadm@conradhotels.com

**290**  
HOTEL ROOMS  
Including 67 suites

**504**  
THEATRE MEETING CAPACITY  
Kazanami Ballroom



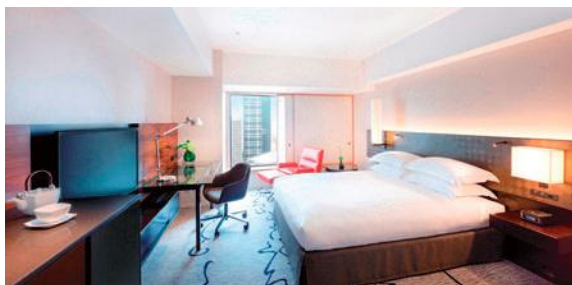


## Hilton Tokyo

### FRONT AND CENTRE

**MEETINGS** The centrally located Hilton Tokyo is one of the largest MICE-equipped hotels in the city, offering a range of meeting spaces and upscale in-house dining options. Traditional Japanese décor—such as paper shoji screens—features throughout the venue, with Kiku Ballroom serving as the hub for large-scale gatherings. The space accommodates up to 1,200 theatre-style, and with an additional 19 meeting rooms on hand, the hotel is primed for events of any size.

Tsunohazu is a 550-seat integrated dining space within the hotel housing a Japanese restaurant, a Western grill, a Chinese eatery and a pastry shop, with a variety of private rooms available. The space can be used for group breakfasts,


**821**

HOTEL ROOMS  
Including 130 suites


**1,200**

THEATRE MEETING CAPACITY  
Kiku Ballroom

lunches and dinners. Zatta, a bar and lounge, is located on the same floor and can be used as an exclusive venue offering live music and DJs.

**CULTURAL HIGHLIGHTS** Outside the hotel grounds, guests are within walking distance of some of the city's top spots for shopping and entertainment. Shinjuku shopping district is right around the corner—home to Isetan, Marui and Odakyu department stores. A five-minute walk takes you to Tokyo City Hall, with a 45th-floor event-ready observation deck looking over Tokyo and Mount Fuji, which is available for events

**TRAVEL** Travelling further around Tokyo's metropolitan area is convenient, with Nishi-shinjuku Station directly connected to the hotel. From there, Shinjuku Gyoen National Garden is a five-minute ride by Tokyo Metro's Marunouchi Line; Tsukiji fish market is a 30-minute ride, and the historic Tokyo Imperial Palace is a 30-minute ride.

For transport upon arrival, the airport limousine bus stops at the hotel—it takes only 45 minutes from Haneda and 90 minutes from Narita.

### INSIDER'S TIP

**WHEN IN TOKYO**, spice up your event with a host of unique group activities. Stop by the Robot Restaurant to witness a one-of-a-kind show, or the Hilton Tokyo can arrange for the robots to attend gala events in the ballroom. Other exhilarating options include taking to the streets in go-karts, Mario Kart-style; undertaking ninja school; or even trying your hand at Tokyo drifting.

### CONTACTS

ADDRESS: 160-0023, Shinjuku-ku, 6-2  
Nishi-shinjuku 6-Chome, Japan  
TEL: +81-3-3344-5111  
EMAIL: [tokyo@hilton.com](mailto:tokyo@hilton.com)



## Hilton Tokyo Bay

### GOING COASTAL

Located on the eastern shore of Tokyo Bay, the hotel offers panoramic ocean views with ease of access to central Tokyo.

**MEETINGS** Featuring 16 meeting rooms, the hotel's largest event space, the Soara Ballroom, caters for up to 1,400 people theatre-style. The space's lighting technology includes 916m of ambient line lights and more than 70 recessed ceiling movable spotlights with automatic programming, alongside a premium sound system.

Most of the hotel's function rooms are located on the second floor, offering delegates the flexibility to move between meeting rooms to breakout rooms. Meeting rooms and the foyer are flooded with natural daylight, creating a calm and collected environment for events.

**DINING** Further event spaces include the Garden Pool and Aqua Terrace, surrounded by a lush Japanese garden. The 50m resort pool—one of the largest garden pools in the area—provides a serene atmosphere and a refreshing outdoor backdrop for cocktail receptions and BBQ parties alike. Located away from the main hotel building, delegates can enjoy the light sea breeze while sipping on champagne and savouring canapés.


**828**

HOTEL ROOMS  
Including 12 suites


**1,400**

THEATRE MEETING CAPACITY  
Soara Ballroom



The hotel can also arrange a themed dinner delving into traditional Japan. With live cooking stations dressed up as festival stalls, the hotel recreates a classical atmosphere with performances based on local traditions, such as taiko, Japanese traditional drums.

**TRAVEL** The hotel is located right on Tokyo Bay within close proximity to Tokyo Disney Resort®, with a daily shuttle bus service from the hotel to Maihama Station. From here, it takes less than 20 minutes to Tokyo Station, Japan's main intercity rail terminal in the Marunouchi business district of Tokyo—near the Imperial Palace and the Ginza commercial district.

### INSIDER'S TIP

**WHEN IN TOKYO BAY**, take off for a once-in-a-lifetime view of the jewel-like colours of Tokyo's glittering nightscape. The heliport is only a five-minute drive from the Hilton Tokyo Bay. Or choose to fly at daybreak, when you can really take in the magnitude of the land of the rising sun.

### CONTACTS

ADDRESS: 279-0031, Urayasu-shi, 1-8  
Maihama, Japan  
TEL: +81-4-7355-5000  
EMAIL: [salesoffice.tokyobay@hilton.com](mailto:salesoffice.tokyobay@hilton.com)





# Hilton Tokyo Odaiba

## ON THE WATERFRONT

Only 20 minutes from Tokyo International Airport by shuttle bus and right across the street from Daiba station on the Yurikamome transit line, Hilton Tokyo Odaiba offers ease of travel in a prime location.

**MEETINGS** The hotel's 22 meeting rooms include Luminous, a 248sqm banquet hall featuring large windows, natural daylight and picturesque views of Rainbow Bridge, Tokyo Tower and Tokyo SKYTREE® over the surrounding Tokyo Bay. The space accommodates up to 120, and is further outfitted with six projectors that bring presentations or event content to a new level.

The hotel also offers four medium-sized banquet rooms, including one with the capacity to host 600 guests for parties, seminars and trade shows, alongside three additional banquet rooms with a wide sea-facing terrace. With spectacular ocean views, the spaces are perfect locales for outdoor cocktail parties and meetings alike.

**TRAVEL** Set on the waterfront, Hilton Tokyo Odaiba is a stone's throw from popular theme parks, malls, dining and entertainment. The hotel offers easy access to Shinagawa and Ginza, as well as cruise ports, major roads and rail lines. As a Tokyo Disney Resort® Good Neighbor Hotel, guests can also enjoy daily free shuttle services to and from the park.



### INSIDER'S TIP

WHEN IN TOKYO, have a bite to eat at SEASCAPE, offering a rich variety of buffet-style cuisine. The restaurant overlooks Tokyo Bay and also incorporates SEASCAPE Sweets & Coffee, perfect for light meals, business brunches or pre-dinner drinks on the private terrace.

### CONTACTS

ADDRESS: 135-8625, Tokyo, 1-9-1, Daiba, Minato-ku, Japan  
TEL: +81-3-5500-5500  
EMAIL: TYOTO-salesadm@hilton.com



**453**

HOTEL ROOMS  
Including 17 suites



**1,564**

THEATRE MEETING CAPACITY  
Pegasus Ballroom



# Hilton Odawara Resort & Spa

## BETWEEN MOUNTAINS AND THE BAY

Set in a stunning location between the Hakone mountains and Sagami Bay, Hilton Odawara Resort & Spa is an idyllic backdrop for exhibitions, conferences and celebrations.

**MEETINGS** The 800sqm Hilton Arena is one of the largest multipurpose convention venues in Odawara. With a capacity of 1,000 people, it has hosted a variety of creative event concepts including sports events, teambuilding activities, disco or dance parties and dinner shows.

A multipurpose, 1,800sqm outdoor venue for up to 300 guests is also on-site, perfect for BBQ parties or firework displays. An additional 19 meeting and banquet rooms are available, many with unbeatable views of Sagami Bay.

**CULTURAL HIGHLIGHTS** Guests can also partake in relaxing options such as a trip to the onsen (hot spring) or stone spa and treatment salon. A golfing range and putting green are within reach while bowling lanes and karaoke rooms provide entertainment options. A Geisha experience in the resort's Japanese banquet room is another highlight for a maximum of 60 guests, or try your hand in the cooking room—which can organise a thrill-inducing cookery competition.

### INSIDER'S TIP

WHEN IN ODAWARA, have Hilton's team arrange a cultural immersion experience making kamaboko fish cake or yosegi mosaics. A walk around Odawara Castle will also transport you back to historical Japan.



**163**

HOTEL ROOMS  
Including 12 suites



**1,000**

THEATRE MEETING CAPACITY  
Hilton Arena



Odawara's famous attractions, such as Odawara Castle, Lake Ashinoko, Hakone Shrine, Fuji-Hakone Izu National Park and Hakone Venetian Glass Museum, are all easily accessible from the hotel, providing a full and exciting itinerary for groups.

**TRAVEL** The resort is just 35 minutes by bullet train from Tokyo, 60 minutes by car from Yokohama, and less than a five-minute ride from Nebukawa Station. Complimentary shuttles from Odawara Station are also ready for use.



### CONTACTS

ADDRESS: 250-0024, Odawara, 583-1 Nebukawa, Japan  
TEL: +81-4-6529-1000  
EMAIL: tyood\_salesoffice@hilton.com

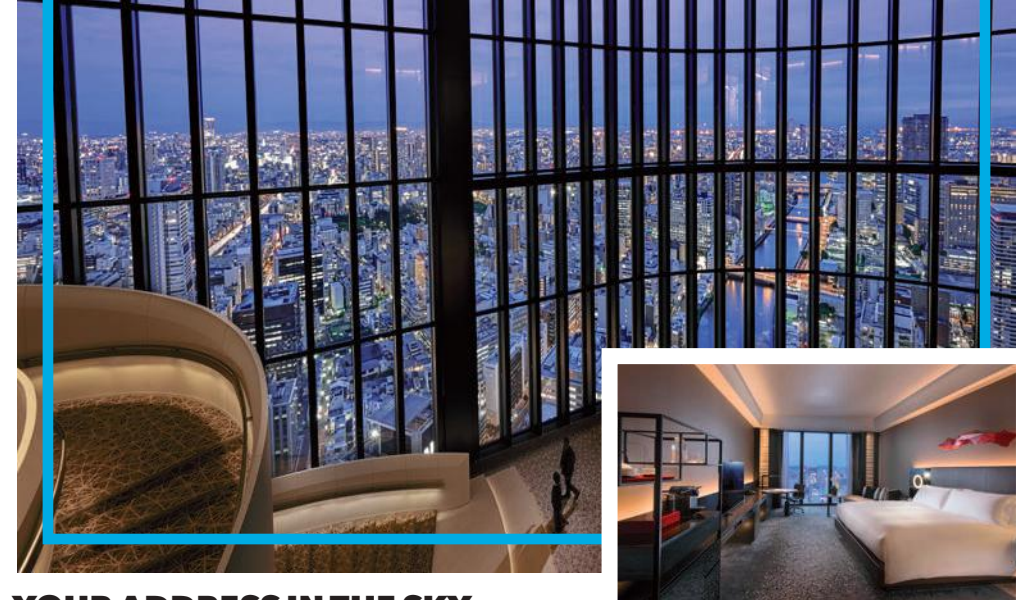
# OSAKA

As Japan's second-largest city, Osaka is a research and knowledge hub, particularly in the fields of life sciences and environment, and is renowned for its huge pop culture scene. The city is also home to some of the best street food and high-end restaurants in the country.

The bustling area of Umeda, located between the city's main stations, is a main transport hub and a sprawling business district, with plenty of shopping, dining and entertainment options. For a

slice of Osakan art and culture, head to the Dotonbori area, home to Tenjinbashi, the largest arcaded shopping street in Japan.

For those attending international conventions, both Conrad Osaka and Hilton Osaka are conveniently located within close proximity to Osaka International Convention Center and Grand Front Osaka. The city's strategic position in central Japan offers visitors easy access to a number of other 'must-see' locations.



## YOUR ADDRESS IN THE SKY Conrad Osaka

Situated on Nakanoshima, the business, administrative, art and culture centre of Osaka, Conrad Osaka is a 100 percent non-smoking hotel with 164 guestrooms and suites, all with floor-ceiling glass windows with clear views across the Osaka cityscape and river. Rooms are some of most spacious offered in Osaka with floor space of 50sqm, while suites range in size from 100sqm (with a separate lounge and bedroom) to the Conrad suite at 220sqm. The hotel's design represents both modern and traditional Japan.

**MEETINGS** For events, groups have a choice of four meeting spaces, including two large ballrooms, a boardroom, and divisible meeting rooms. The 225sqm Ballroom 1 is one-of-a-kind location, positioned at the corner of the 38th floor with floor-to-ceiling windows offering a 180-degree view of Osaka, framing a breathtaking picture of the Kansai Skyline. Every space is pillar-less and welcomes natural daylight through picture windows. Meeting spaces feature built-in projection screens and premium sound systems, while fine furnishings and an ambience of warm earth tones add a touch of style to every occasion.

The 225sqm Ballroom 1 also has a private foyer with a wall of windows and features a spiral 'staircase to heaven'.

Ballroom 1 can accommodate 180 guests theatre-style or 100 guests at round tables, while the slightly smaller Ballroom 2 can accommodate 120 guests theatre-style or 80 guests at round tables.

**TRAVEL** Directly connected to the subway and within walking distance of Osaka central station, the hotel also offers convenient access to Kansai International Airport. Umeda and Namba are close by, while Kyoto is also only 15 minutes away by bullet train from Shin-Osaka Station.

### INSIDER'S TIP

WHEN IN OSAKA, visit the Kosetu Museum on the fourth floor of Nakanoshima Festival complex, exhibiting artwork from Ryohei Murayama's (the founder of Asahi Shimbun) private collection. Note, June marks Conrad Osaka's first anniversary. In celebration, the hotel is planning several restaurant and spa promotions, as well as opening a new pastry shop.

### CONTACTS

ADDRESS: 530-0005, 3-2-4 Nakanoshima, Kita-ku, Osaka, Japan  
TEL: +81-6-6222-0111  
EMAIL: [Osaci-salesadm@conradhotels.com](mailto:Osaci-salesadm@conradhotels.com)

**164**  
HOTEL ROOMS  
Including 8 suites

**180**  
THEATRE MEETING CAPACITY  
Ballroom 1





Hilton Osaka has undergone a top-to-toe makeover, combining modern luxury with local touches. Everything from its guest rooms and banquet facilities to executive lounge and public spaces has been upgraded, culminating in the transformation of its F&B offerings this summer.

**MEETINGS** The hotel offers more than 3,530 sqm of well-equipped event space, including three dedicated floors connected by elevators and escalators. This April, two new mansion-style banquet rooms with a connecting foyer opened, taking its total number of banquet rooms to 15. All this is backed by a meetings team with years of experience.

**DINING** Four new dining stars will soon showcase some of Japan's best local produce and seasonal flavours, including a 64-seat grill restaurant with a wine room, a 90-seat Japanese restaurant equipped with its own sake bar, and a 116-seat all-day diner. These outlets will complement MYPLACE CAFE & BAR, and the hotel's famed 35th-floor Windows on the World Sky Lounge.

**TRAVEL** The hotel is right across the road from Osaka Station and provides easy access to Kyoto, Nara and Kobe. Osaka Itami International Airport is 25 minutes by car, while the main transport hub—Kansai International Airport—is 65 minutes by car.



### INSIDER'S TIP

The city is known as the 'food bowl' of Japan for good reason—the 2018 Michelin Guide to Japan recommended 227 restaurants in Osaka alone. Tasty treats such as takoyaki (octopus balls), okonomiyaki (savory pancakes) and kushikatsu (crumbed skewers) all got their start here—it's no wonder the local motto is kuidaore or 'Eat until you drop!'

### CONTACTS

ADDRESS: 8-8 Umeda 1-chome, Kita-ku, Osaka, 530-0001, Japan  
TEL: +81-6-6347-7111  
EMAIL: osaka.info@hilton.com

**562**  
HOTEL ROOMS  
Including 27 suites

**1,000**  
THEATRE MEETING CAPACITY  
Sakura Ballroom



With its central location in Japan and proximity to Chubu Centrair International Airport, Nagoya is ideal regardless if travelling on business or for leisure. Surrounded by several heritage sites holding special cultural or physical significance, Nagoya's proximity allows for day trips to places like Hida Takayama, Ise or Kyoto, and offers a retreat after a day out in the city.

**MEETINGS** Made for business, Hilton Nagoya offers a simple but essential menu for the MICE planner—with 15 meeting rooms that can serve events that range from intimate to large.

Located on the top floor of the hotel, its sky banquet—One O Five—offers panoramic views of Nagoya, and is a dramatic setting for any occasion with a remarkable 105-metre-high view of the city.

The hotel can host up to 700 for dinner in Oogi, its traditional European style ballroom with a pillar-less design and high ceilings. Another 14 meeting rooms can cater to a variety of events, providing state-of-the-art technology.

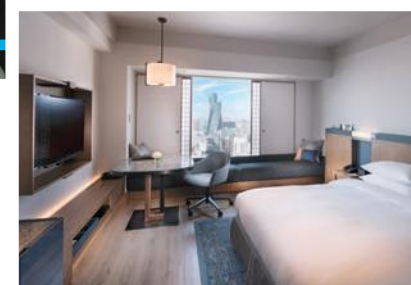
**DINING** At the morning buffet, enjoy Nagoya's specialty foods like pork cutlet with miso sauce and kishimen. For

### INSIDER'S TIP

WHEN IN NAGOYA, add a unique spin to your event theme. Inspired by the opening of LEGOLAND® Japan, add the team's latest creation—a unique LEGO panel, as well as canapés in the shape of the iconic building block for a one-of-a-kind event experience.

**460**  
HOTEL ROOMS  
Including 15 suites

**1,200**  
THEATRE MEETING CAPACITY  
Oogi Ballroom



lunch and dinner options, choose from Teppanyaki steak, sushi, tempura, fine Chinese cuisine and a Mediterranean buffet. KIWAMI Cocktail Bar, renovated in 2015, is also recommended for fine cocktails and a wide range of beverages.

**TRAVEL** Accessibility is Hilton Nagoya's strength: just one station away from Sakae, the city's teeming entertainment district, and only five minutes by car to Nagoya Station—from there, the Meitetsu Airport line connects to the airport in 28 minutes.

Located in Nagoya's central shopping and business area, the hotel offers a complimentary shuttle service to Nagoya Station and even has a bike rental service for guests who want to explore the city on two wheels.

### CONTACTS

ADDRESS: 460-0008, 3-3, Sakae 1-Chome, Naka-ku, Nagoya, Aichi, Japan  
TEL: +81-5-2212-1111  
EMAIL: nagoya.info@hilton.com



# Hilton Niseko Village

## THE GREAT OUTDOORS

Japan's premier resort is nestled among the foothills of Mount Yotei, offering unique conference experiences for both international and domestic meeting and incentive groups. A good fit for any season, Hilton Niseko Village has built quite a reputation as a hub for outdoor activities.

**MEETINGS** The hotel's seven meeting rooms can accommodate private ceremonies, intimate dinners, corporate conferences, meetings and parties. The hotel's largest venue is the 820sqm Hokkaido room, which features a 13-storey atrium and top-notch audiovisual facilities. The six further conference rooms provide quality options for breakout, office or dining space, as well as stunning views of the surrounding ski slopes. Large outdoor spaces are also ready and waiting for teambuilding or icebreaker sessions.

**CULTURAL HIGHLIGHTS** Niseko isn't just an outdoor enthusiast's paradise, it's also known as a melting pot of local culture and food. The hotel's bilingual team can arrange specialists such as an onsen sommelier, vegetable sommelier or sake brew master to put a fresh spin on conferences.

### INSIDER'S TIP

WHEN IN NISEKO, delegates can enjoy the nearby Showa-shinzan, a volcanic lava dome; Lake Toya, which is the second most transparent lake in Japan and which doesn't freeze in winter; and a visit to the Yoichi Nikka Whisky Distillery.

**506**  
HOTEL ROOMS  
Including 1 suites

**900**  
THEATRE MEETING CAPACITY  
Hokkaido Room



### CONTACTS

ADDRESS: 048-1592, Hokkaido, Abuta-gun,  
Niseko-cho, Higashiyama Onsen, Japan  
TEL: +81-1-3644-1111  
EMAIL: reservation\_niseko@hilton.com

# Hilton Fukuoka Sea Hawk

## THE HIGHLIGHT OF HAKATA BAY

Every room in Hilton Fukuoka Sea Hawk offers a stunning view of the Hakata Bay, in the heart of Momochi district of Fukuoka. The hotel is 20 minutes from Tenjin, Hakata and Nakasu, the shopping and entertainment areas of Kyushu.

**MEETINGS** With 37 meeting rooms—conferences, congresses, exhibitions and meetings of any variety can be accommodated. The Argos Convention Hall can host up to 1,500 guests for an elegant, seated gala dinner or 3,300 theatre-style. The hotel can also arrange for themed performances, from wadaiko drum shows to Japanese food exhibitions. Larger groups of up to 10,000 guests can be hosted at Yahuoku! Dome, situated right next to the hotel.

**DINING** One of the hotel's top-tier venues is the Seala Brasserie & Lounge—situated on the fourth floor, it has 550 seats including a lounge, private dining room and a contemporary dome-shaped Aura—all under the iconic 40m high glass-roofed atrium.

In the hotel's neighborhood, the new Mark Is Fukuoka Momochi commercial centre is set to open in late 2018, serving as a perfect location for shopping and dining alike. The four-storey building is conveniently located right across

### INSIDER'S TIP

WHEN IN FUKUOKA, why not check out a yatai stall by the river for a casual dinner? A typical street food stand unique to this city, yatai stalls serve up a variety of delicious local favourites including tonkotsu ramen, yakitori and other Kyushu specialties.

**1,053**  
HOTEL ROOMS  
Including 68 suites

**3,300**  
THEATRE MEETING CAPACITY  
Argos Convention Hall



from Hilton Fukuoka Sea Hawk and will span 125,000sqm, with a total of 150-200 stores expected to open for business.

**TRAVEL** The hotel is a 20-minute drive from Fukuoka International Airport and Fukuoka Tower is a 10-minute walk from the hotel. Meanwhile, Nishijin district—offering 400-plus restaurants—is 8 minutes by bus.



### CONTACTS

ADDRESS: 810-8650, Fukuoka-shi, 2-2-3  
Jigyohama, Chuo-ku, Japan  
TEL: +81-9-2844-8111  
EMAIL: fukhi-salesadm@hilton.com



# OKINAWA

With white-sand beaches, a subtropical climate and a string of luxury resorts, it's easy to see why Okinawa, located southwest of mainland Japan, is a popular incentive destination.

Outdoor activities are the main draw here, with marine sports such as sailing, kayaking, snorkelling or banana boat rides available from many of the resort hotels on the island and water-based team-

building options, including dragon boat races.

Inland options include a visit to the stunning Shuri Castle, or a stroll down Kokusai Dori, the island's vibrant shopping and dining thoroughfare. Okinawa is also a popular choice for its outdoor CSR activities, which include beach clean-ups followed by a BBQ-style party, or an enlightening trip to the island's unique Pineapple Park.



Situated in the centre of Okinawa, Hilton Okinawa Chatan Resort is a favoured venue for more intimate events and larger corporate conferences alike.

**MEETINGS** Its largest room, the Grand Ballroom, can cater to up to 400 delegates, theatre-style, with 450sqm of space to work with. The adjoining foyer overlooks the hotel's gardens and offers a perfect respite for pre-function drinks, while five accompanying meeting rooms of differing sizes provide audiovisual equipment and business services for groups.

Local Okinawan ingredients make their way into an ever-changing, multicultural menu at the hotel's restaurants. Entertainment is customisable, with Okinawan eisa drums and dance, musicians and fire-dancers available. The attached Italian restaurant, Corrente, hosts special events on a monthly basis.



**346**  
HOTEL ROOMS  
Including 12 suites

**400**  
THEATRE MEETING CAPACITY  
Grand Ballroom

**CULTURAL HIGHLIGHTS** For those with an adventurous streak, a variety of marine sports activities are available at the nearby Arah Beach. The hotel provides a complimentary shuttle to the beach, just a 10-minute ride from the property.

**TRAVEL** The Naha International Airport is a 40-minute drive, with the surrounding area navigable by either taxi or shuttle.

## INSIDER'S TIP

WHEN IN OKINAWA, don't miss out on the opportunity to immerse yourself in Okinawan culture at Ryukyu Village, where groups are treated to hands-on activities like making pottery, weaving, painting and more. To bring the historical experience full circle, travel down south to Shuri Castle to get a glimpse of the days when Okinawa was known as the Ryukyu Kingdom.

## CONTACTS

ADDRESS: 904-0115, Okinawa, 40-1  
Mihama, Chatan-cho, Japan  
TEL: +81-98-901-1111  
EMAIL: OKAOC-SALESADM@hilton.com

# DoubleTree by Hilton Okinawa Chatan Resort

OCEANFRONT EVENTS

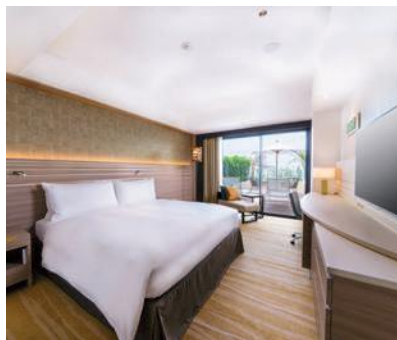


DoubleTree by Hilton Okinawa Chatan Resort offers a lush resort environment on the Pacific Ocean perfect for delegates to unwind. Access to all of the amenities at the integrated Hilton Okinawa Chatan Resort are also available at your convenience.

**EVENTS** The hotel's beachfront 43 West Rooftop Bar serves as a unique multi-purpose venue. Imagine your group admiring stunning views of the ocean or sunset while sipping a cocktail. How about a live band, or even traditional drums and dancing for entertainment? The hotel's chefs can also customise a mouth-watering menu using fresh local produce from Okinawa.

**CULTURAL HIGHLIGHTS** Be sure to visit the Mihama American Village, just a few steps from the hotel. The large entertainment complex houses shops, restaurants, cafés and bars as well as a cinema and live-music venue. Get a spectacular panoramic view of the ocean as you ride the giant Ferris Wheel, a landmark of Chatan town. Okinawa Churaumi Aquarium, Cape Manzamo and Ryukyu Village are also within easy access.

**TRAVEL** Naha International Airport is a 40-minute drive from the resort, accessible by taxi or airport limousine shuttle.



## INSIDER'S TIP

Swim, snorkel or dive in clear waters and enjoy the white sandy beaches along the Miyagi Coast, a 10-minute drive from the hotel. Also known as the 'Sunabe Seawall', there are various restaurants and dive shops available. The blue waters are an excellent dive or snorkelling spot during the day. By night, restaurants and bars offer a taste of laid-back island life.

## CONTACTS

ADDRESS: 904-0115, Chatan, 43 Mihama, Chatan, Nakagami-gun, Japan  
TEL: +81-98-936-0310  
EMAIL: OKADI-SALESADM@hilton.com



**160**

HOTEL ROOMS  
Including 4 suites

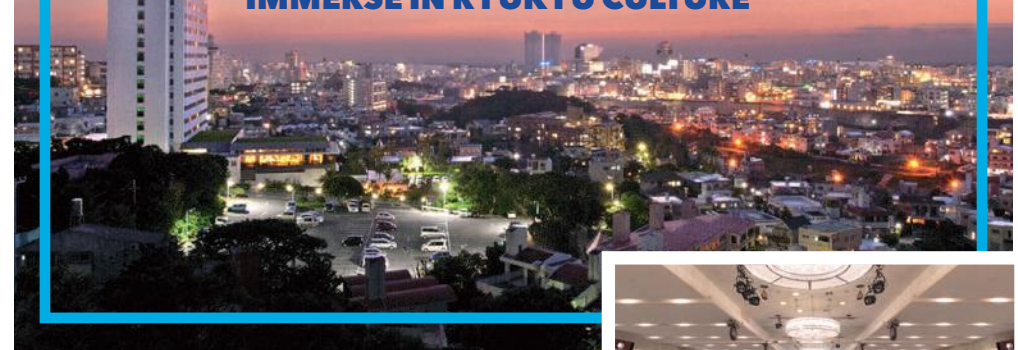


**400**

THEATRE MEETING CAPACITY  
Adjacent Hilton Okinawa Chatan Resort

# DoubleTree by Hilton Naha Shuri Castle

IMMERSE IN RYUKYU CULTURE



Located within walking distance of historic Shuri Castle, DoubleTree by Hilton Naha Shuri Castle is a unique hotel in a remarkable locale.

**MEETINGS** The primary space for banquets, parties, exhibitions and meetings is the Shuri Room, capable of hosting 700 guests theatre-style, with vaulted ceilings and room partitions available. Meanwhile, the Sky View Lounge offers 180-degree views of Naha city, and caters to both private events and large-scale gatherings of up to 200.

**DINING** Newly renovated in 2017, the Grand Castle Café & Dining offers buffet-style breakfast, lunch and dinner, with an ambience mixing traditional Ryukyu culture with contemporary design. Signature dishes, locally sourced beverages and beautiful picture windows all make for a one-of-a-kind dining experience for guests.

## INSIDER'S TIP

WHEN IN OKINAWA, the first weekend of November every year is marked by the Ryukyu Dynasty Festival held in Shuri Park, celebrating the king who long ago visited the three temples surrounding Shuri Castle, praying for safety and a gainful harvest. The candle-lit streets and the castle itself, adorned by paper lanterns, are a sight to see during the festival.



**333**

HOTEL ROOMS  
Including 5 suites



**700**

THEATRE MEETING CAPACITY  
Shuri Room



**CULTURAL HIGHLIGHTS** Groups will be within striking distance of Naha City Makishi Public Market and Seifa-utaki, a sacred Shinto shrine among towering rock formations. Surrounding day trips around Okinawa island include the Churaumi Aquarium, or Chinen Marine Leisure Centre—a popular launch point for tours to Komaka Island.

**TRAVEL** The hotel is a 15-minute drive from the Naha city centre, a 27-minute drive from Naha International Airport, and a six-minute drive from Shuri Station. The surrounding city is navigable by taxi, shuttle or monorail alike.

## CONTACTS

ADDRESS: 9038601, Naha, 1-132-1 Shuri Yamagawa-cho, Japan  
TEL: +81-98-886-5454  
EMAIL: nahashuricastle\_sales@hilton.com



# DoubleTree by Hilton Naha

## OKINAWA'S INTERNATIONAL AVENUE



**TRAVEL** Located strategically on Route 58—the major road which connects the northern and southern parts of Okinawa—DoubleTree by Hilton Naha is the most convenient and accessible hotel for groups looking to meet on the island, just 10 minutes from Naha Airport by car or monorail.

**CULTURAL HIGHLIGHTS** The hotel is within walking distance of the main office street and Kokusai-Dori, or 'International Avenue', a bustling, vibrant 2km stretch of road harkening back to the Japan of old. A shopping arcade, restaurants and cafés line the streets. Stop by Makishi Public Market to sample local flavours, with made-to-order dishes featuring the region's best herbs, spices and seafood.

### INSIDER'S TIP

WHEN IN OKINAWA, check out Shuri Ryusen, a local store selling and offering classes in making Okinawan arts and crafts. Of particular note is the coral dyeing class, where groups of up to 20 can use coral fossils to decorate t-shirts and tote bags.

For a taste of Japan's famed wine and spirits, pubs are open late. Meanwhile dancers, fire-eaters and various street performers regularly parade the area, making for endless entertainment in the heart of Okinawa.



### CONTACTS

ADDRESS: 900-0034, Naha City,  
3-15 Higashi-machi, Japan  
TEL: +81-98-862-0123  
EMAIL: [naha.reservations@hilton.com](mailto:naha.reservations@hilton.com)

**225**  
HOTEL ROOMS  
Including 1 suite

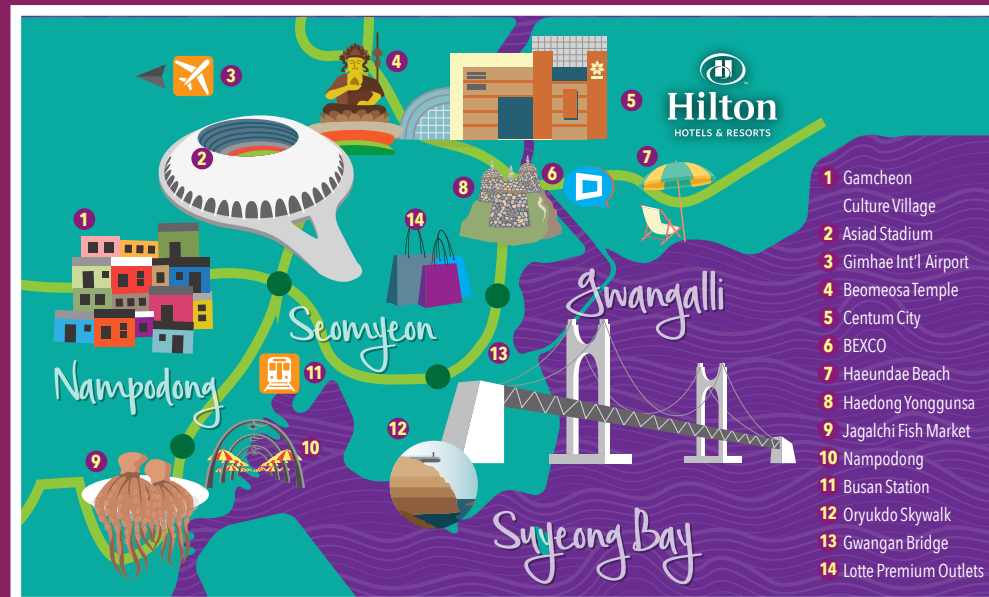
**14**  
THEATRE MEETING CAPACITY  
Board Room



## SEOUL & BUSAN

One of Asia's most well-connected capitals, the modern and the traditional are equally well represented in Seoul—it is one of the most advanced cities in the world, but boasts a culture steeped in history and tradition. COEX and SETEC are Seoul's representative convention centres.

Located on the southeastern tip of Korea, the bustling port of Busan is Korea's second largest, with superb beaches and scenic cliffs alongside mountains providing hiking trails and stunning views. The 90,000sqm BEXCO is capable of hosting the largest events the MICE industry has to offer.



- 1 Gamcheon Culture Village
- 2 Asiad Stadium
- 3 Gimhae Int'l Airport
- 4 Beomeosa Temple
- 5 Centum City
- 6 BEXCO
- 7 Haeundae Beach
- 8 Haedong Yonggungsa
- 9 Jagalchi Fish Market
- 10 Nampodong
- 11 Busan Station
- 12 Oryukdo Skywalk
- 13 Gwangan Bridge
- 14 Lotte Premium Outlets



## Conrad Seoul

### WALKING KOREA'S WALL STREET

Strategically located at the helm of the city's International Finance Centre (IFC) in Yeouido Business District—known as the 'Wall Street of Korea'—Conrad Seoul is a luxury hotel and MICE venue for delegates who mix business with pleasure.

**MEETINGS** With 14 meeting rooms, two ballrooms—each with a private foyer and daylight windows—and more than 2,608sqm of function space, Conrad Seoul has hosted a variety of Korean-themed events including cultural nights, Nanta performances and immersion programmes. It has even held a Korean Street Food event with street stalls to serve food and beverage in tents.

The hotel has an exclusive view over the picturesque Han River and offers Seoul's largest accommodation selection with twin rooms featuring two queen-sized beds.

**CULTURAL HIGHLIGHTS** The hotel can also hold cooking classes for guests to learn how to make Korean rice cakes, kimchi and bibimbap, or even organise a dance class for K-pop enthusiasts.

VVertigo, the outdoor sky lounge located on the 9th floor of Conrad Seoul, is an ideal place for unique open-air events. Choose from cocktail receptions, BBQ parties or event coffee breaks to create the perfect team building function for you.



Create the atmosphere of your choice at VVertigo depending on the time and theme of your chosen event.

Nestled between three other high-profile towers of IFC, the hotel provides easy access to a lifestyle mall, a cineplex and dining and leisure outlets.

#### INSIDER'S TIP

WHEN IN SEOUL, take an early morning trip to Noryangjin Fish Market, only a five-minute walk from Conrad Seoul. Noryangjin is the largest fish market in South Korea and is a perfect setting to experience first-hand the lively local Korean culture.

#### CONTACTS

ADDRESS: 10 Gukjegeumyung-ro (Yeouido) Yeongdeungpo-gu, Seoul, 07326, South Korea  
TEL: +82-2-6137-7000  
EMAIL: ConradSeoul.Sales@conradhotels.com

**434**  
HOTEL ROOMS  
Including 47 suites

**1,000**  
THEATRE MEETING CAPACITY  
Grand Ballroom



## Hilton Busan

### SEASIDE VIBES

The ultimate urban retreat, Hilton Busan is situated on a beautiful seafront location in Busan's Gijang County, offering unique value and experiences for guests with its pristine environment. The hotel offers 310 spacious guest room with private balconies and endless ocean views.

**MEETINGS** Hilton Busan is the perfect business and leisure venue with an exciting combination of indoor and outdoor event venues, by the sea. The hotel's indoor and outdoor meeting spaces include the pillar-less Cruise Grand Ballroom, seating up to 1,500 theatre-style, the Ocean Garden, Ocean Terrace and an additional seven dedicated meeting rooms.

Guests can enjoy stunning, panoramic views from the comfort of the hotel's McQueen's Bar, or vouch for an island getaway theme for a gala dinner. Ocean Garden's outdoor event package, catering for up to 500 for cocktails or 230 for banquets, comes complete with natural décor, exotic flowers to set the scene, and an extensive seafood menu—not to mention the oceanfront view.

**CULTURAL HIGHLIGHTS** The city is the Mecca of marine sports and leisure in South Korea, offering windsurfing, yachting, jet-skiing and surfing. Meanwhile, shopping options are never hard to find. Shingsegae is the world's largest department store, and Lotte Outlets—a five-minute

**310**  
HOTEL ROOMS  
Including 8 suites

**1,500**  
THEATRE MEETING CAPACITY  
Grand Ballroom



drive from the hotel—offers more than 150 international and local brands, and also houses a cinema, a scenic rooftop garden, a dedicated lighthouse and a gazebo.

**TRAVEL** Gimhae International Airport is a 50-minute drive from the hotel's location, or a 40-minute drive from Busan KTX Station.

#### INSIDER'S TIP

WHEN IN BUSAN, the iconic Haedong Yonggungsa Temple is just a 10-minute walk from the hotel, and is one of only four temples in South Korea set along the ocean. Surrounded by blue waters and constructed along the seaside cliffs, it boasts several centuries of rich history.

#### CONTACTS

ADDRESS: 268-32 Gijanghaean-ro, Gijang-eup, Gijang-gun, Busan, 46083, South Korea  
TEL: +82-51-509-1111  
EMAIL: PUSHI-SALESADM@hilton.com



# CAPACITY CHART 會議設施總覽

LOCATION 位置	HOTEL 酒店名称	NUMBER OF HOTEL ROOMS 客房数量	NUMBER OF MEETING ROOMS 会议室数量	LARGEST MEETING SPACE (SQM / SQ.FT) 最大的会议空间 (平方米 / 平方英尺)	THEATRE MEETING CAPACITY 剧院式布局可容纳人数	BANQUET MEETING CAPACITY 宴会式布局可容纳人数
Niseko 新雪谷	<b>Hilton Niseko Village</b> 北海道新雪谷希尔顿度假酒店	506	7	820 Sqm (8,826 Sqft)	900	400
Tokyo 东京	<b>Conrad Tokyo</b> 东京康莱德酒店	290	12	577 Sqm (6,210 Sqft)	504	243
	<b>Hilton Tokyo</b> 东京希尔顿酒店	821	20	932 Sqm (10,032 Sqft)	1200	600
	<b>Hilton Tokyo Bay</b> 东京湾希尔顿酒店	828	16	1,188 Sqm (12,787 Sqft)	1400	800
	<b>Hilton Tokyo Odaiba</b> 东京御台场希尔顿酒店	453	22	1,200 Sqm (11,935 Sqft)	1564	1020
	<b>Hilton Odawara Resort &amp; Spa</b> 小田原希尔顿温泉度假村	163	19	806 Sqm (8,568 Sqft)	1000	680
Nagoya 名古屋	<b>Hilton Nagoya</b> 名古屋希尔顿酒店	460	15	971 Sqm (10,451 Sqft)	1200	700
Osaka 大阪	<b>Conrad Osaka</b> 大阪康莱德酒店	164	4	225 Sqm (2,400 Sqft)	180	100
	<b>Hilton Osaka</b> 大阪希尔顿酒店	562	15	1,554 Sqm (16,727 Sqft)	1000	600
Fukuoka 福岡	<b>Hilton Fukuoka Sea Hawk</b> 福岡海鷹希尔顿酒店	1053	37	2,440 Sqm (26,237 Sqft)	3300	1500
Okinawa 冲绳	<b>Hilton Okinawa Chatan Resort</b> 冲绳北谷希尔顿度假酒店	346	5	450 Sqm (5,029 Sqft)	400	330
	<b>DoubleTree by Hilton Okinawa Chatan Resort</b> 冲绳北谷希尔顿逸林度假酒店	160				
	<b>DoubleTree by Hilton Naha Shuri Castle</b> 那霸首里城希尔顿逸林酒店	333	10	568 Sqm (6,300 Sqft)	700	420
	<b>DoubleTree by Hilton Naha</b> 那霸希尔顿逸林酒店	225	1	40 Sqm (430 Sqft)	14 (board room style) 行政会议室格局	N/A
Seoul 首尔	<b>Conrad Seoul</b> 首尔康莱德酒店	434	14	940 Sqm (10,125 Sqft)	1000	700
Busan 釜山	<b>Hilton Busan</b> 釜山希尔顿酒店	310	11	1,419 Sqm (15,274 Sqft)	1500	750





## HILTON HONORS EVENT PLANNER PROGRAM

Through the Hilton Honors Event Planner Program, you can earn Bonus Points for meetings, conferences, family reunions, weddings and other special events held at participating hotels within the Hilton Portfolio worldwide. Use these Points for your next meeting or event, or even your next getaway!

The event planner first must be a member of Hilton Honors to receive Points in connection with the event. To become a Hilton Honors member, visit [www.hiltonhonors.com](http://www.hiltonhonors.com).

For full event planner terms & conditions visit [http://hiltonhonors3.hilton.com/en/terms/index.html#event\\_planner\\_program](http://hiltonhonors3.hilton.com/en/terms/index.html#event_planner_program)

\*Earn 1 Hilton Honors Point per US\$1 spent on guest rooms, meeting rooms and more on qualifying events at participating hotels within the Hilton portfolio. No minimum spend required.

\*Points can be awarded on up to US\$100,000 of business, allowing planners to earn more than 100,000 Hilton Honors points through promotions.

\*Event Credits are now available globally, allowing you to use points to book your next meeting at any property within the Hilton portfolio.



## 希尔顿荣誉客会活动策划者奖励计划

通过希尔顿荣誉客会活动策划者奖励计划，只要在已加入此计划的希尔顿旗下酒店举办活动，不论是会议、大会、家庭聚会还是婚礼等，均可获得奖励积分。下次在希尔顿名下酒店举办活动或入住希尔顿名下酒店时，可使用这些积分扣除费用。

活动策划者首先必须成为希尔顿荣誉客会会员，才能加入有关计划，获取积分。如想登记成为希尔顿荣誉客会会员，请到[www.hiltonhonors.com](http://www.hiltonhonors.com)。

有关活动策划者奖励计划的条款与细则，请参考 [http://hiltonhonors3.hilton.com/en/terms/index.html#event\\_planner\\_program](http://hiltonhonors3.hilton.com/en/terms/index.html#event_planner_program)

\*在已加入计划的希尔顿名下酒店租用客房、会议室及举行合格的活动，每消费1美元便可赚取1希尔顿荣誉客会积分。不设最低消费额。

\*每次最多可兑换100,000美元，即每次最多可凭此推广计划获得100,000希尔顿荣誉客会积分。

\*Event Credits优惠券现已全球通用，于希尔顿名下酒店预订会议活动，可凭优惠券扣除费用。



# 东京

在东京，主要的活动场地包括东京 Big Sight，也就是东京国际展示中心，以及 Tokyo International Forum (TIF) 会议中心。为迎接2020年举行的东京夏季奥运会，当地正如火如荼地进行基础建设。

旅行团可以前往黄金街一带闲逛，体验气氛热络的日本居酒屋文化。另外，筑地鱼市场、气氛浓厚的浅草区、东京最古老的寺庙浅草寺及仲见世的商业街等，都是适合会奖团体闲逛游览的观光点。参观明治神宫，到原宿发掘最新时尚潮流也是不错的选择。



## 摩天大楼

## 东京康莱德

坐落于汐留车站上方，与新桥站有行人通道连接。汐留位于东京市中心以南，为繁华的商业区，步行十分钟就可以到达世界闻名的银座购物娱乐区。

**会议设施** 酒店设有十二间会议室，当中大部分采用自然采光设计。附属大楼设有两个宴会厅风波和滨离宫。前者（可分隔成三个小厅）能够举办多达480人的鸡尾酒会，或是504人的剧院式布局活动。后者可以分成两个活动场地，最多可举行180人的鸡尾酒会或剧院式布局活动。

在东京康莱德酒店举办活动，可以选择不同的主题。举例说，以“现代日本”为主题的活动会设置美食摊档及请来当地工匠到场献艺，让与会者在装潢美轮美奂及以当季鲜花布置的大厅里，体验寿司制作和日本烧烤的魅力，是甚受欢迎的团建活动。

晚宴之后，酒店会为与会者安排一场集合日本现代舞和原创电脑动画图案的表演。这场由现实与虚拟世界共构的独一无二的表演，不论是来自哪个国家的观众，都会为之倾倒。

**交通** 酒店距离羽田机场仅18公里，车程约30分钟；成田国际机场则在60公里之外，车程不用一个半小时。东京最受欢迎的地区，如银座、浅草和秋叶原等，以及滨离宫恩赐庭园和皇居等景点，都在酒店附近。

**290**  
间客房  
包括67间套房

**577**  
平方米  
Kazanami宴会厅



## 小贴士

来到东京，一定要去东京康莱德酒店，跟侍酒师北原康行一起探索各种日本酒。北原是第四届世界日本酒侍酒师比赛的冠军，在他协助下，到来品尝美酒佳肴的客人不仅将焦点放在菜肴本身，对如何欣赏最优质的日本酒，食物和日本酒的搭配等的知识也会增长不少。

## 联络方法

地址：105-7337, Tokyo, 1-9-1  
Higashi-Shinbashi, Minato-ku, Japan  
电话：+81-3-6388-8000  
电邮：tyoci-salesadm@conradhotels.com





## 东京希尔顿

城市焦点

**会议设施** 位于中心地段的东京希尔顿酒店，其会展设施是东京市内酒店中规模最大的，提供一系列多用途会议室和高级餐厅。酒店的Kiku宴会厅采用传统日本风格装潢，比如使用障子纸门等。Kiku为酒店的主要大型活动场地，剧院式布局的话可容纳1,200位客人。酒店另外亦有19个会议室，可以举办任何规模的活动。

能容纳550人的综合餐饮设施Tsunohazu，包括有日式餐厅、西式烧烤餐厅、中式餐厅、甜品店及多个私人包间，可用作团体的早、午、晚餐场地。同层的酒吧兼酒廊Zatta有现场音乐和DJ表演，也可作为活动场地。

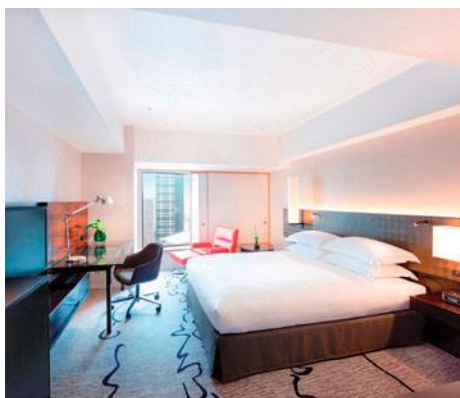
**观光景点** 走出酒店，东京著名购物休闲热点只有举步之遥，邻近的新宿商圈就有伊势丹、丸井和小田急三家大型百货公司。距离酒店约五分钟步程的东京市政厅，45楼设有观景台，可眺望东京市区和富士山，是举行活动的理想场地。

**交通** 酒店与西新宿车站相连，前往东京大都会区内其他地方均十分方便。从西新宿站乘坐东京地铁丸之内线，前往新宿御苑、筑地鱼市场和历史悠久的东京皇居，前者只需五分钟，后者只需30分钟。

东京羽田和成田机场均有机场巴士前往酒店，直达酒店门口，车程分别为45和90分钟。

**821**  
间客房  
包括130间套房

**932**  
平方米  
Kiku宴会厅



### 小贴士

在东京时，用一些特别的旅行团活动增添趣味吧。去机器人博物馆看一场独一无二的秀，或者东京希尔顿酒店可以安排机器人参加舞厅里的盛会。其他令人愉快的选择还有开著玛利欧赛车风格的卡丁车走上街头；加入忍者学校；甚至尝试一下东京漂移。

### 联络方法

地址：160-0023, Shinjuku-ku, 6-2 Nishi-shinjuku 6-Chome, Japan  
电话：+81-3-3344-5111  
电邮：tokyo@hilton.com



## 东京湾希尔顿

大海呼唤

酒店位于东京湾，尽享无敌海景，前往东京市中心也交通便利。

**会议设施** 酒店拥有16个会议室，其中最大的活动场地Soara宴会厅，最多可举办1,400人的剧院式布局活动。宴会厅的照明技术十分先进，拥有长达916米的LED线性照明系统，超过70盏由程式自动控制的活动天花板射灯，另外还配备高级的音响系统。

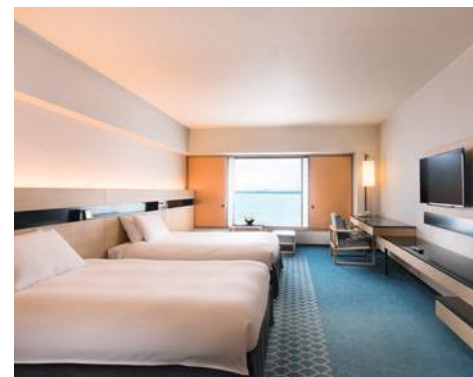
酒店内大部分的多功能室均位于二楼，方便与会代表穿梭于会议室和小组讨论室之间。会议室和前厅有充足的自然光，为活动营造沉静而专注的氛围。

**晚宴活动** 酒店另外还有池边活动场地Garden Pool and Aqua Terrace，50米长的泳池是东京湾一带最大的花园泳池之一。这个活动场地四周被郁郁葱葱的日本庭园包围，宁静而清新怡人的环境，适合举行鸡尾酒会和烧烤派对等。泳池离开酒店主楼，与会代表们可以边喝著香槟、吃著小吃，边享受徐徐的海风。

酒店可以安排以传统日本文化为灵感的主题晚宴，将现场烹饪

**828**  
间客房  
包括12间套房

**1,188**  
平方米  
Soara宴会厅



台装扮成节日的摊位，再配合本地的传统表演，如太鼓等，营造出传统的氛围。

**交通** 酒店位于东京湾，靠近东京迪士尼乐园。酒店有车子往返舞滨车站，从舞滨到位于东京丸之内商业区的东京站，需时不到20分钟。东京站是日本的主要城际铁路枢纽，靠近皇居和银座商业区。

### 小贴士

来到东京湾，一定要飞到空中尽享难得一见的宝石般闪耀的东京夜景。也可以选择打破晓时分起飞，欣赏太阳从日出之国升起的美景。直升机场离东京湾希尔顿酒店只有5分钟车程。

### 联络方法

地址：279-0031, Urayasu-shi, 1-8  
Maihama, Japan  
电话：+81-4-7355-5000  
电邮：salesoffice.tokyobay@hilton.com





# 东京御台场希尔顿

## 在水一方

东京御台场希尔顿酒店离东京国际机场仅需20分钟车程，位于有轨电车百合海鸥号台场站对面，名副其实的位置优越、交通便捷。

**会议设施** 酒店有22个会议室，包括248平方米、最多可容纳120人的Luminous。该会议室配备巨大的玻璃窗，引入自然光之余，东京湾上的彩虹桥、东京塔和东京晴空塔等美景也一览无余。它还配备六部投影机，作为汇报或活动场地，能发挥如虎添翼的效用。

酒店另外也设有四个中等面积的晚宴厅，其中之一能容纳600位客人，可举行派对、研讨会和贸易展。另外三个则拥有宽广的露台，面向大海，坐享无敌海景，是举办户外鸡尾酒会和户外活动的理想地点。

**交通** 坐落在海边，东京御台场希尔顿酒店离著名主题公园、商场和餐饮娱乐胜地仅一箭之遥。从酒店前往品川和银座交通十分便利，附近还有邮轮码头、主干道和铁路。酒店是“东京迪士尼乐园的好邻居酒店”，每天为客人提供免费班车服务，前往东京迪士尼乐园。



### 小贴士

在东京时，不妨在SEASCAPE餐厅用餐，为您提供种类丰富的自助餐。从餐厅里可以俯瞰东京湾，还提供SEASCAPE甜品与咖啡，十分适合在此享用简餐、商务午餐，或者在晚餐前在私人吧台小酌一杯。

### 联络方法

地址：135-8625, Tokyo, 1-9-1, Daiba, Minato-ku, Japan  
电话：+81-3-5500-5500  
电邮：TYOTO-salesadm@hilton.com

**453**  
间客房  
包括17间套房

**1,200**  
平方米  
Pegasus宴会厅



# 小田原希尔顿 温泉度假村

山与海之间

坐落在箱根的山峦和相模湾之间的绝佳位置，小田原希尔顿温泉度假村为展览、会议和庆典等活动提供富有田园气息的场地。

**会议设施** 面积800平方米的Hilton Arena，是小田原地区最大的多功能会场之一，能容纳1,000人。这里曾经举办各种富有创意的活动，包括体育活动、团建活动、迪士尼或舞蹈派对及晚宴等。

度假村还拥有占地1,800平方米的多用途户外场地，最多可容纳300人，是举办烧烤派对或烟火表演的一流场所。酒店另外还有19个会议室和宴会厅，许多均面向景色绝佳的相模湾。

**活动观光** 酒店为客人提供温泉、岩盘浴和水疗等放松身心的设施。附近还有高尔夫球场和练习场，另外还有保龄球场和卡拉OK等娱乐设施。酒店可容纳60人的日式宴会厅，会邀请艺伎表演，机会难逢。客人也可到烹饪室一展身手，甚至安排刺激的烹饪比赛。

由酒店前往小田原各大著名景点，如小田原城、芦之湖、箱根神社、富士箱根伊豆国立公园和箱根玻璃之森美术馆等，均十分方便，行程保证丰富。

### 小贴士

来到小田原，可以请希尔顿酒店代为安排一次文化体验，尝试制作“蒲鉾”（即鱼板、鱼糕）及寄木细工艺。漫步小田原城也是不错的选择，能带您回到古代日本。

**163**  
间客房  
包括12间套房

**806**  
平方米  
Hilton Arena



**交通** 乘坐新干线由东京前往酒店只需35分钟；与横滨距离60分钟车程；离根府川火车站仅5分钟车程。酒店更免费提供班车，接送客人往返小田原火车站。



### 联络方法

地址：250-0024, Odawara, 583-1 Nebukawa, Japan  
电话：+81-4-6529-1000  
电邮：tyood\_salesoffice@hilton.com



大阪

位于几个主要车站之间的梅田，繁华热闹，是大阪主要的交通枢纽和商业区之一，拥有大量的购物、餐饮和娱乐场所。中之岛地区则屹立了大阪科学博物

对于那些前来参加国际会议的访客来说，大阪康莱德酒店和大阪希尔顿酒店，均邻近大阪国际会议场和时尚潮流圣地Grand Front Osaka，坐拥地利之便。大阪地处日本中部的有利位置，通往其他日本“必游”城市均交通便利。



空中会议  
大阪康莱德

A modern hotel room with a large bed, a desk, and a view of the city. The room features a large bed with white linens, a desk with a chair, and a large window offering a view of the city. The room is decorated with a modern, minimalist design, including a large bed, a desk, and a large window. The room is well-lit with warm lighting, and the overall atmosphere is comfortable and inviting.

面积225平方米的Ballroom 1宴会厅，位于38楼的转角处，位置优越，透过落地窗可欣赏180度的大阪景观，把迷人的关西天际线尽收眼底。该Ballroom 1宴会厅以剧院式布局可容纳180人，以圆桌式布局则可坐100人；Ballroom 2宴会厅则分别可容纳120及80人。

### 小贴士

## 联络方法

地址：530-0005, 3-2-4 Nakanoshima,  
Kita-ku, Osaka, Japan  
电话：+81-6-6222-0111  
电邮：Osaci-salesadm@conradhotels.com



**164**  
间客房  
包括8间套房



**225**  
平方米  
Ballroom 1宴会厅



# 大阪希尔顿酒店

## 城市之心



大阪希尔顿酒店现已全新升级，将现代奢华与当地特色融为一体。今年夏天，从酒店的客房、宴会设施、行政酒廊到公共空间都进行了全线升级，餐厅也重新开张。

**会议设施** 酒店可提供超过3530平方米设施齐全的活动场所，以及由三楼联通至五楼的电梯和手扶梯。今年4月，两间全新、互通的别墅式宴会厅投入使用，宴会厅总数增至15间。这些均由经验丰富的会议团队策划。

**餐饮设施** 四家新开的时尚餐厅将很快推出当地及当季美食，餐厅包括可容纳64位客人的烧烤餐厅和酒窖；可容纳90位客人的日式餐厅和Sake（日本酒）酒吧；以及可容纳116为客人的all-day diner。此外，本酒店还有 MYPLACE CAFE & BAR 咖啡吧以及位于35楼、著名的 Windows on the World 空中酒廊。

**交通** 大阪希尔顿酒店距离大阪国际（伊丹）机场仅25分钟车程，距离关西国际机场65分钟车程。从酒店对面的大阪站乘坐JR火车，大约30分钟内可抵达京都、神户以及奈良等地。



### 小贴士

因为2018年日本米其林指南推荐的餐厅中，有227家位于大阪，所以它被誉为日本的“美食天堂”。章鱼烧、大阪烧、串烧等美食都起源于此地，难怪当地有一句名言说：“吃到倒下为止！”。

### 联络方法

地址：8-8 Umeda 1-chome, Kita-ku,  
Osaka, 530-0001, Japan  
电话：+81-6-6347-7111  
电邮：osaka.info@hilton.com

**562**  
间客房  
包括27间套房

**1,554**  
平方米  
Sakura宴会厅



# 名古屋希尔顿

## 两都之间

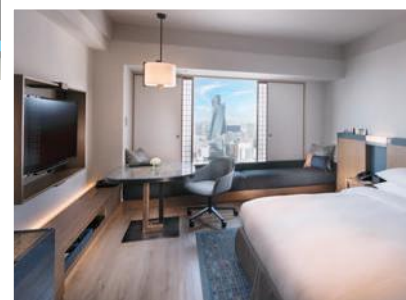
地处日本的中心位置，靠近Centrair中部国际机场，无论商务还是休闲游，名古屋都是理想的选择。名古屋除了拥有多个文化及自然遗产，地理位置也十分优越，到飞驒高山、伊势或京都等地作一天游均十分方便。这里宁静的环境，也是在城市里忙完一天后理想的休息地方。

**会议设施** 名古屋希尔顿酒店具备会议活动所需的基本设施，包括15间会议室，可举办小型以至大型的活动。

位于酒店顶层的One O Five宴会厅，离地105米，可360度欣赏名古屋市；这样的景观可为任何活动增添色彩。

其传统欧式宴会厅Oogi没有柱子阻挡，天花板极高，可举办多达700人的晚宴。另有14间可用于各类活动、配备最先科技设备的会议室。

**餐饮设施** 自助早餐供应名古屋的特色食品，如猪排、味噌和菓子面等。午餐和晚餐则有铁板烧牛排、寿司、天妇罗、精致中菜和



地中海美食自助餐。另外，2015年重新装潢的KIWAMI鸡尾酒吧，不仅有各式精致的鸡尾酒，还有其他佳酿可供选择。

**交通** 交通方便是名古屋希尔顿酒店的特点之一：与市内娱乐热点菜区仅仅相隔一个车站。另外离名古屋火车站也只有5分钟车程，从那里搭乘名铁机场线仅需28分钟即可到达中部国际机场。

酒店位于名古屋的中央购物和商业区，提供前往名古屋火车站的班车服务，另外还为那些想骑车探索名古屋的客人提供自行车租赁服务。

### 联络方法

地址：460-0008, 3-3, Sakae 1-Chome,  
Naka-ku, Nagoya, Aichi, Japan  
电话：+81-5-2212-1111  
电邮：nagoya.info@hilton.com

**460**  
间客房  
包括15间套房

**971**  
平方米  
Oogi宴会厅





北海道新雪谷希尔顿度假酒店位于羊蹄山山脚，是日本顶尖的滑雪胜地。在这里举办会议活动，不管是国内还是海外旅客均能获得独一无二的体验。酒店有户外活动枢纽之誉，附近一带一年四季均有各种户外活动选择。

**会议设施** 酒店设有七间会议室，可承办私人庆祝活动、小型晚宴、企业会议以至派对等各式活动。最大的活动场地Hokkaido宴会厅，面积达820平方米，中庭高13层，拥有一流的影音设备。另外六间会议室，眺望周遭壮观的滑雪坡道，可作中途休息、办公或设宴之用。酒店还有大型户外场地，适合举行团建活动或让与会者互相认识的“破冰环节”之类的活动。

**文化特色** 新雪谷不仅是户外运动天堂，也是当地文化与美食的熔炉。酒店负责会议活动的员工能说两种语言，可以安排温泉专家、蔬菜专家或日本米酒酿酒大师为会议活动带来新鲜的体验。

### 小贴士

来到北海道，与会代表可以到访当地由火山熔岩形成的昭和新山，日本第二清澈、冬季也不会结冰的洞爷湖，以及Nikka Whisky在北道道的威士忌酒厂——余市蒸馏所。

**506**  
间客房  
包括1间套房

**820**  
平方米  
Hokkaido宴会厅



### 联络方法

地址：048-1592, Hokkaido, Abuta-gun, Niseko-cho, Higashiyama Onsen, Japan  
电话：+81-1-3644-1111  
电邮：reservation\_niseko@hilton.com



福岡海鷹希尔顿酒店位于百道区中心，可饱览博多湾的壮丽美景。酒店距离九州的购物和娱乐热点天神、博多和中洲仅20分钟路程。

**会议设施** 酒店拥有37间会议室，可举办会议、大会、展览和小型会议等不同规模和形式的活动。Argos会议厅可举行1,500人、设座位的晚会，以剧院式布局更可容纳3,300人。酒店可以安排各种主题表演，包括和太鼓表演及日本美食展等。另外，毗邻酒店的Yahuoku! Dome可举办10,000人的大型活动。

**餐饮设施** 位于四楼的顶级餐馆Seala，置身于玻璃屋顶高40米的中庭里，设有酒廊、私人包间及一座当代风格的Aura拱顶小礼堂，总共可坐550位客人。

酒店附近的全新商业中心Mark Is Fukuoka Momochi预计于2018年底开幕，将会成为福岡的购物和餐饮热点。这栋四层楼的建筑毗邻福岡海鷹希尔顿酒店，面积高达125,000平方米，预计将设有150至200家店铺。

**交通** 酒店距离福岡国际机场仅20分钟车程，步行10分钟就能到达福岡塔。有400多家餐厅的西新区，乘公车8分钟可达。

### 小贴士

来到福岡，何不前往河边的屋台，一尝当地的美食风味。屋台是福岡独有街边小吃摊，提供豚骨拉面、烧鸡等各种九州美食。

**1,050**  
间客房  
包括68间套房

**2,440**  
平方米  
Argos会议厅



### 联络方法

地址：810-8650, Fukuoka-shi, 2-2-3 Jigyohama, Chuo-ku, Japan  
电话：+81-9-2844-8111  
电邮：fukhi-salesadm@hilton.com



# 冲绳

位于日本四岛西南面，拥有白沙沙滩，亚热带气候宜人，加上众多的豪华度假酒店，难怪冲绳深受会奖旅游团体欢迎。

户外活动是冲绳的主要特色，岛上许多度假酒店都为客人提供帆船、皮划艇、浮潜或香蕉船等海上运动，亦有水

上团队建设活动，如龙舟等。

陆上方面则有轻松的远足活动，如探索位于主岛北部的东南植物乐园或栖息了多种动物的山原森林。冲绳的户外企业社会责任活动也大受游客欢迎，比如清理海滩并举行海滩烧烤派对或是参观红树林等。



岛上生活

## 冲绳北谷希尔顿



位于冲绳岛中部，冲绳北谷希尔顿度假酒店欢迎小规模的活动和会议。

**会议设施** 最大的宴会厅Grand Ballroom，面积为450平方米，剧院式布局可容纳400人。相连的前厅可眺望酒店花园，是迎宾酒会的理想举办地点。另外，还有5间大小不一的会议室，配备视听设备，团体可在此进行商务活动。

酒店餐厅采用当地食材烹调各国美食，并不时更新菜单。酒店可为客人量身设计娱乐节目，如冲绳太鼓舞、冲绳音乐和火舞表演等。

相邻的意大利餐厅Corrente每月均会举办特别节目。

**文化特色** 酒店附近的安良波海滩可找到各种各样的海上活动，可满足喜欢刺激的游客。酒店提供往返海滩的接驳巴士服务，车程仅10分钟。

**交通** 距离那霸国际机场仅40分钟车程，可搭乘出租车或免费班车浏览周边地区。



### 小贴士

在冲绳，一定不要错过去琉球村将自己置身于冲绳文化中的机会，旅行团在这里有机会亲手尝试制陶、编织、画画等活动。为了使您的历史体验圆满，也可以到南部的首里城，体会一下冲绳被称为琉球王国的时代。

### 联络方法

地址：904-0115, Okinawa, 40-1 Mihama, Chatan-cho, Japan  
电话：+81-98-901-1111  
电邮：OKAOC-SALESADM@hilton.com

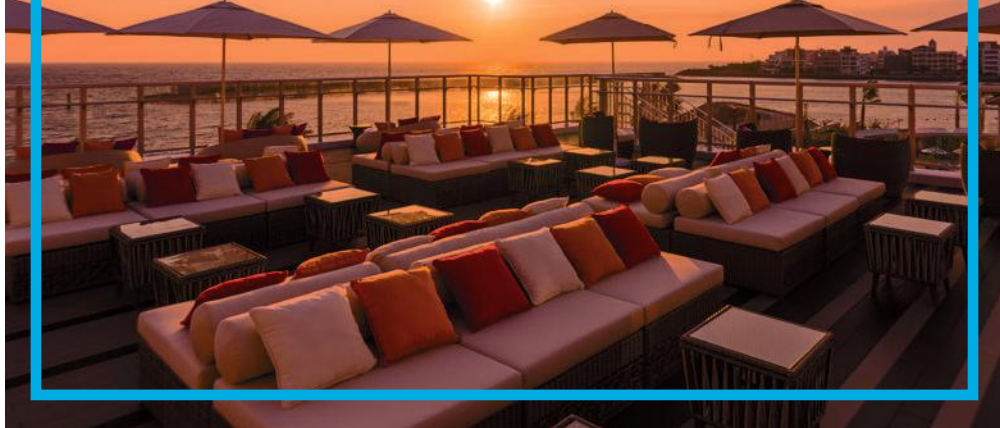
**346**  
间客房  
包括12间套房

**450**  
平方米  
Grand Ballroom 宴会厅



# 冲绳北谷 希尔顿逸林

海滨活动



冲绳北谷希尔顿逸林是毗邻太平洋的豪华海滨度假酒店，是尽情享受轻松时光的理想选择。住客还可使用冲绳北谷希尔顿度假酒店内的一切设施。

**会议设施** 酒店的43 West天台酒吧可眺望太平洋，是独具特色的多用途场地。想像一边欣赏迷人海景或夕阳，一边享用鸡尾酒的场景？又或是请乐队或乐手来现场演出，或者举办一场传统的大鼓和舞蹈表演？我们的厨师可以利用冲绳当地的食材为活动量身设计各式佳肴。

**文化特色** 距离酒店不远的美滨町美国村是大型娱乐购物中心，设有商店、餐厅、咖啡厅和酒吧，以及戏院和音乐表演场地，千万不要错过。那里还有北谷镇的地标——巨型摩天轮，乘坐摩天轮，可一览太平洋的壮丽海景。从酒店出发前往美丽海水族馆、万座毛和琉球村等著名冲绳景点也十分方便。

**交通** 那霸国际机场距酒店约40分钟车程，可乘坐出租车或机场豪华巴士前往酒店。



## 小贴士

宫城海岸防波堤距离酒店约10分钟车程，堤外是海水清澈的太平洋，堤内则餐厅和潜水用品店林立。白天，湛蓝的海水十分适合潜水或浮潜；入夜后，餐厅和酒吧则合力营造悠闲的海岛度假氛围。附近一带，也有适合畅泳的白沙海滩。

## 联络方法

地址：904-0115, Chatan, 43 Mihama, Chatan, Nakagami-gun, Japan  
电话：+81-98-936-0310  
电邮：OKADI-SALESADM@hilton.com

**160**  
间客房  
包括4间套房

**450**  
平方米  
邻近冲绳北谷希尔顿度假酒店

# 那霸首里城 希尔顿逸林

体验琉球文化



换上全新品牌形象的那霸首里城希尔顿逸林酒店，与冲绳历史古迹首里城只有举步之遥，拥有优越的地理位置。

**会议设施** 主要活动场地Shuri宴会厅，穹顶设计，以剧院式布局能容纳700名宾客。宴会厅可分隔成多个小厅，可举办宴会、派对、展览和会议等。另外，Sky View酒廊可180度饱览那霸市美景，既适合私人活动也可举办200人的大型聚会。

**餐饮设施** 餐饮设施2017年重新装修，装潢结合琉球传统和现代设计的The Grand Castle Café & Dining餐厅，提供自助式早、午和晚餐。招牌美食、本地出产的饮料和窗外如画的风光，糅合成天下无双的餐饮体验。

**文化特色** 酒店离第一牧志公设市场和由石头组成的神道圣地——斋场御岳，均交通便捷。在冲绳本岛一天游，可选择到美丽海水族馆或知念海洋休闲中心——前往Komaka岛的热门出发点。

**交通** 酒店距离那霸市中心仅15分钟车程，27分钟车程即可抵达那霸国际机场，与首里车站相距更只有6分钟车程。市内观光可乘坐出租车、公车或单轨电车。

**333**  
间客房  
包括5间套房

**568**  
平方米  
Shuri宴会厅



## 小贴士

在冲绳，每年11月的第一个周末会在首里公园举行琉球王朝节，用以纪念很久之前拜访了首里城周围三座寺庙的国王，以祈求安全和丰收。点着蜡烛的街道和装饰着纸灯笼的城堡本身就是节日期间的一道风景。

## 联络方法

地址：9038601, Naha, 1-132-1 Shuri Yamagawa-cho, Japan  
电话：+81-98-886-5454  
电邮：nahashuricastle\_sales@hilton.com



# 那霸希尔顿逸林

冲绳的国际大街



**交通** 位于连接冲绳北部和南部的国道58号线旁，占地地利之便，加上由那霸机场乘汽车或单轨电车前往酒店仅需10分钟，因此深受会奖旅客欢迎。

**文化特色** 由酒店可步行到那霸主要商业街及国际通大街。两公里长的国际通热闹而色彩缤纷，呈现日本的昔日风貌。大街旁有一座购物商场，餐厅和咖啡店林立。游客可在第一牧志公设市场稍作停留，品尝以当地最好的香草、香料和海鲜烹调，现点现做的各种地道佳肴。

这里的酒吧营业到深夜，供应日本著名的葡萄酒和烈酒。另外，大街上定期有舞蹈、火舞等各种街头表演，使冲绳岛的心脏任何时候都生气勃勃。

## 小贴士

在冲绳，可以搜索一下一家叫首里琉染的本地商店，他们出售并提供制作冲绳风格艺术品和工艺品的课程。需要特别注意的是珊瑚染色课，最多20个人的小组在课上可以使用珊瑚化石来装饰T恤和托特包。



## 联络方法

地址：900-0034, Naha City,  
3-15 Higashi-machi, Japan  
电话：+81-98-862-0123  
电邮：naha.reservations@hilton.com

**225**  
间客房  
包括1间套房

**40**  
平方米  
Board Room宴会厅



## 首尔 & 釜山

首尔是亚洲交通最便利的大都会之一，也是世界上最发达的城市，但同时其文化也深深植根于历史和传统，现代和传统兼收并蓄。COEX和SETEC是首尔最重要的会展场地。

繁华的港口城市釜山位于南韩的东南端，是该国的第二大城市。釜山景色秀丽，以绵延的海岸线闻名，拥有壮丽的海滩和悬崖，还有许多远足径。釜山会展中心面积达90,000平方米，可举办最大规模的会展活动。







## 首尔康莱德

漫步首尔华尔街

首尔康莱德酒店地理位置优越，位于有南韩华尔街之称的汝矣岛商业区内的国际金融中心（IFC）。酒店无论住宿还是会展场地均设计豪华，适合公务与休闲并重的旅客。

**会议设施** 首尔康莱德拥有14间会议室、两个宴会厅——每一间都有专属前厅和日光充足的窗户，以及超过2608平方米的多功能场地。酒店主办过各种以南韩文化为主题的活动，包括文化之夜、乱打秀表演和各种体验活动等。其中南韩美食街活动，在帐篷内搭建餐饮摊档，为客人奉上当地街头小吃和饮料。

酒店坐享汉江如画的风光，并提供首尔面积最大的双人房——放置两张特大双人床。

**文化亮点** 首尔康莱德可为客人举办烹饪课程，教授南韩年糕、泡菜和石锅拌饭的烹调方法，另外也可为韩流爱好者安排舞蹈班。

九楼的露天酒廊Vvertigo是理想的户外活动场地，适合举办鸡尾酒欢迎会、烧烤派对和茶歇等联谊活动。Vvertigo可根据活动的时间和主题，为您量身打造合适的气氛。

首尔康莱德置身于IFC另外三座摩天大楼之间，毗邻就是时尚用品商场、电影院和餐饮休闲场所等。



### 小贴士

来到首尔，可以在清晨前往南韩最大的鱼类市场——鹭梁津水产市场。鹭梁津离首尔康莱德酒店只有五分钟车程，是亲身体验当地生活文化的好去处。

### 联络方法

地址：10 Gukjegeumyung-ro (Yeouido)  
Yeongdeungpo-gu, Seoul, 07326, South Korea  
电话：+82-2-6137-7000  
电邮：conrad\_seoul@conradhotels.com

**434**  
间客房  
包括47间套房

**940**  
平方米  
Grand Ballroom宴会厅



## 釜山希尔顿

海边的脉搏

酒店位于釜山市机张郡漂亮的海傍，周遭的天然美景，不仅为酒店赢得终极都市隐居处的美誉，更为住客送上难得的住宿体验。

**会议设施** 釜山希尔顿酒店拥有临海的室内外活动场地，是举办商务活动及休息度假的好地方。酒店的室内外活动空间，包括有无柱宴会厅Cruise Grand Ballroom——以剧院式布局可容纳1,500人，以及Ocean Garden、Ocean Terrace及七个专用会议室。

坐拥日落美景的天台酒吧兼烧烤餐厅McQueen's Bar，会举办以岛屿度假为主题的晚宴。户外活动场地Ocean Garden以自然装饰和充满异国情调的花卉布置——当然还有那无敌海景衬



**310**  
间客房  
包括8间套房

**1,419**  
平方米  
Grand Ballroom宴会厅

托，供应丰盛的海鲜美食，可举行多达500人的鸡尾酒会，或是230人的宴会。

**文化亮点** 釜山是南韩的海上运动胜地，有帆板、帆船、摩托艇和冲浪等海上运动选择。这个港口城市也不乏购物选择，这里有全球最大的百货商场新世界；离酒店仅5分钟车程的Lotte Outlets汇聚150多个国际和本地品牌，还设有电影院、风景优美的天台花园、灯塔和凉亭等。

**交通** 酒店离金浦国际机场只有50分钟车程；如果乘坐火车前来，釜山KTX火车站离酒店更只有40分钟车程。

### 小贴士

来到釜山，一定要到离酒店约10分钟车程的地标建筑——海东龙宫寺。那是南韩仅有的四座海边寺庙之一，湛蓝的大海一望无际。寺庙屹立了几百年，拥有丰富的历史。

### 联络方法

地址：268-32 Gijanghaean-ro, Gijang-eup,  
Gijang-gun, Busan, 46083, South Korea  
电话：+82-51-509-1111  
电邮：PUSHI-SALESADM@hilton.com



